

# TANNHÄUSER GOES BRASIL

nach Motiven von Richard Wagner      Manfred Honetschläger

1  $\text{♩} = 200$  cor I

Corno 5

*mf* ————— *fp*

7

*mf* ————— *f*

13

*mp*

19

25

31

*mp*

lead

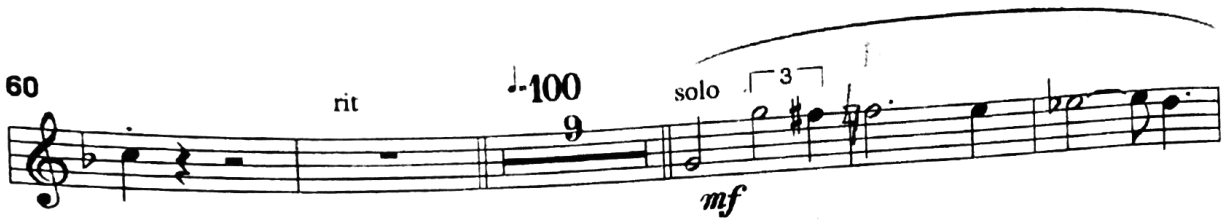
48

*f* ————— *f*

54



60



74



82

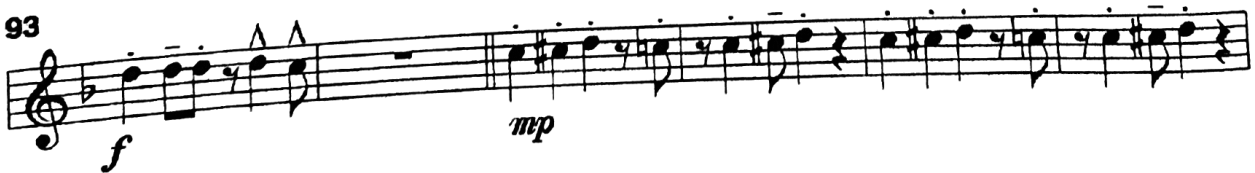


♩-200  
double time

87



93



99



Tannhäuser goes Brasil Page 3  
Cor 5

105

111

123

lead

*mp* *f*

129

134